

OUTSOURCING

8Manage SPM supports the following types of outsourcing:

- Staff augmentation and out-tasking
- Selective BPO and ITO
- Comprehensive BPO and ITO

For staff augmentation and out-tasking, 8Manage SPM supports the job requisition, matching, interview, negotiation, contracting and effort tracking and payment functions between acquirers and providers.

For manufacturing out-tasking, 8Manage SPM provides the contracting function, the management of the movements of materials, WIP and finished goods and the control of quality and wastages.

For selective BPO and ITO, 8Manage SPM supports planning, contracting and tracking of schedule, quality, progress, efforts, issues, costs and payments.

For comprehensive BPO and ITO, 8Manage SPM provide goal setting, discovery, strategic planning, contracting, transition and outsourcing project management functions.

1. Staff augmentation



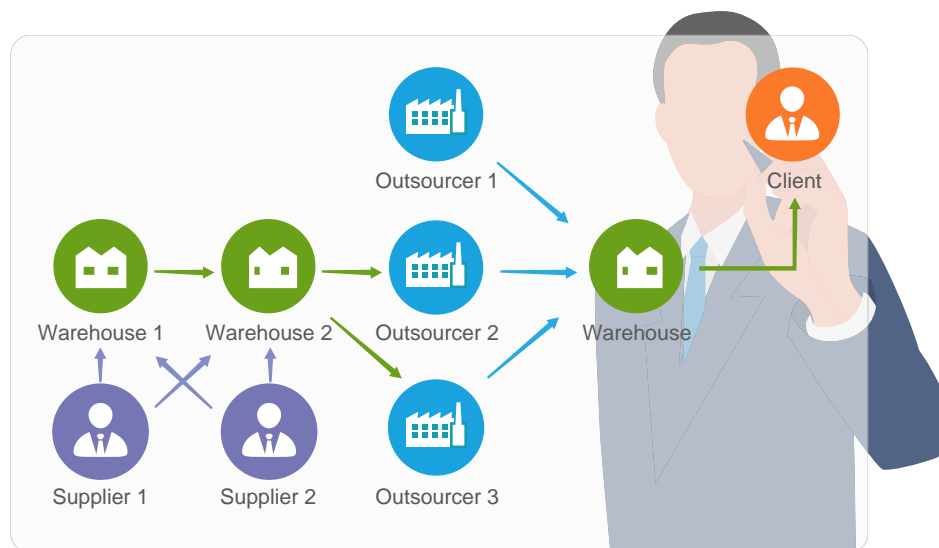
8Manage SPM allows the acquirer to define the responsibilities and skill requirements for different jobs that it intends to acquire staff resources for and then submit requisitions and the provider to fill the requisitions based on the availability of its matched resources and/or allow its freelancers to apply to the acquirer directly.

8Manage SPM can **automatically** match the skill set requirements in the job requisitions with the credentials of the candidates. If the provider allows its freelancers apply to its acquirers directly, 8Manage SPM can also **automatically** push the matched job requisitions onto the job app of the qualified freelancers so that they can view what job opportunities are available to them and use their job app to apply for the jobs and set up interviews. All these can be done in **real-time**.

After the acquirer and provider agree on the staff arrangement, 8Manage SPM support contract establishment and the management of service level, invoices, payments and penalty after the contract is signed. 8Manage SPM also provides engagement project management and timesheet functions to record and track activities, deliverables and efforts.

8Manage SPM provides end-to-end automation for staff augmentation outsourcing. Functions such as job opportunity, interview, engagement activity, output deliverable and timesheet are also available in mobile apps.

2. Manufacturing out-tasking

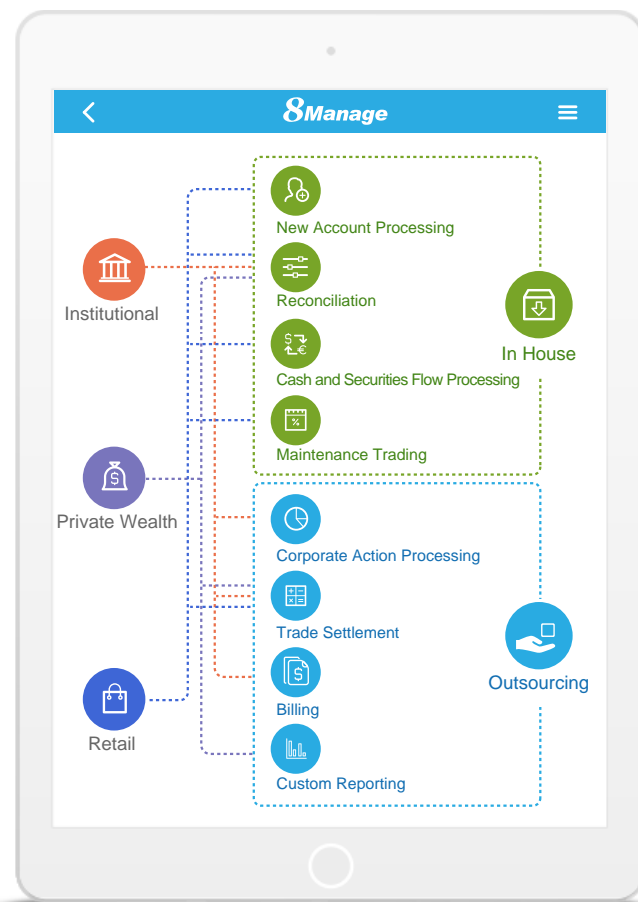


8Manage SPM supports the following functions for manufacturing out-tasking:

- Keeping up-to-date information on the availability and capacity of out-tasking vendors
- Contractual terms and service level tracking
- Material, WIP and finished goods movement management
- Wastage control
- Quality control
- Vendor performance assessment

8Manage SPM maps all out-tasking activities to internal manufacturing activities and manage their input, output and controls the same as if it is managing internal manufacturing activities. From quality control standpoint, the WIP or finished goods done by the out-tasking vendors and internally are the same.

3. Selective BPO and ITO



Since selective BPO and ITO often involve service deliveries, 8Manage SPM provides functions for planning, contracting and tracking of schedules, quality, progress, efforts, issues and costs and payments.

8Manage SPM allows the user to define metrics or performance key indicators (KPI) target as service level agreement to be embedded in the contract and supports the tracking of the KPI for performance based penalty and/or pricing.

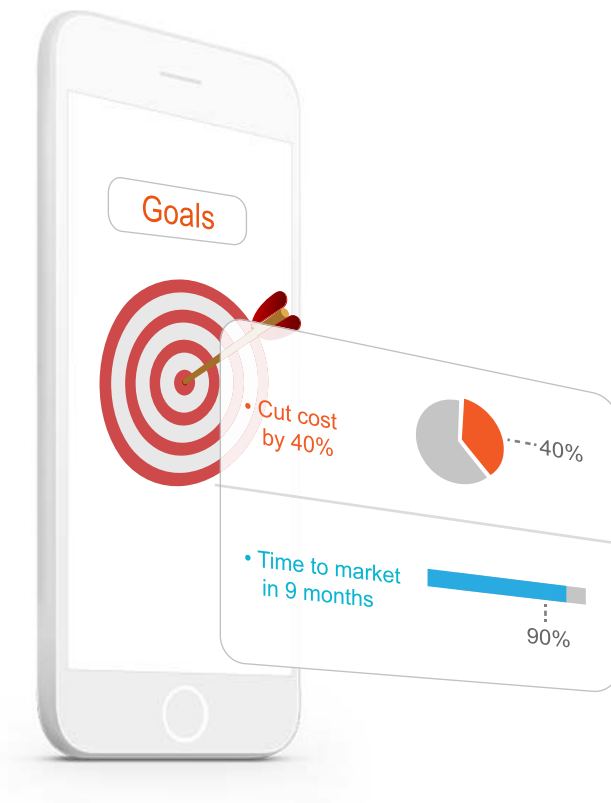
4. Comprehensive BPO and ITO

Since comprehensive BPO and ITO require a lot of upfront planning, 8Manage SPM provide goal setting, discovery, strategic planning, contracting, transition and outsourcing project management functions.



- **Goal Setting**

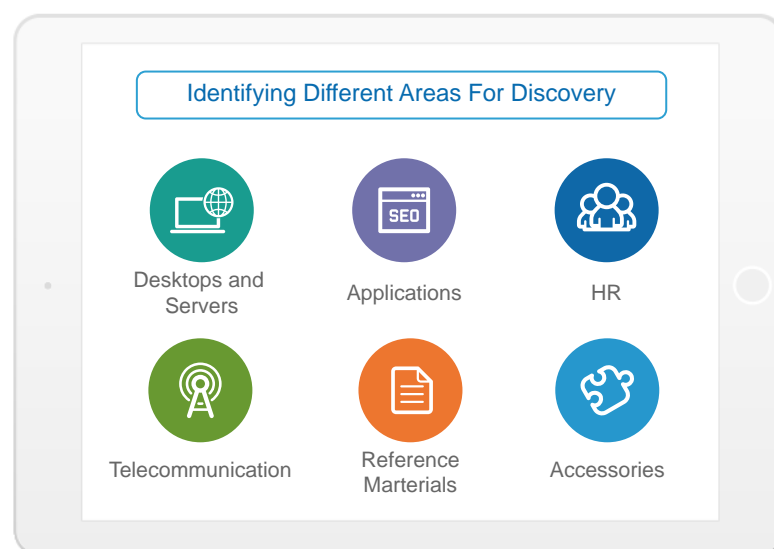
Since almost all BPO/ ITO involve capability, capacity, speed, quality and cost improvements and some BPO/ITO involve selling-off current assets such as data center, networks and servers in exchange near-term capital, 8Manage SPM supports clear goal setting and tracking for BPO/ITO initiatives.



After the start of the BPO/ITO, 8Manage SPM will keep track of the goals and results so that the user can see the discrepancies clearly between the goals and the results and take corrective actions accordingly.

• Discovery

Since comprehensive BPO/ITO often involve transferring staff, licenses, equipment, parts, facilities and service responsibilities to the outsourcers, 8Manage SPM provides tools to help the user identify different areas for discovery and perform quantitative and cost analysis in each area to be transferred to the outsourcers.



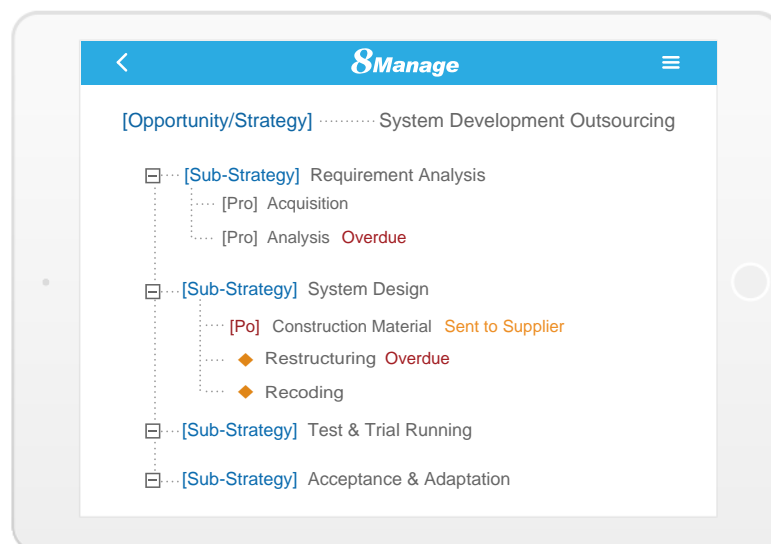
8Manage SPM allows the user categorize items and record counts and costs. The quantitative information will be aggregated from lowest-level organizations to the topmost organization.

Area	Count	Cost
[-] Discovery	476	109,785,086.00
[-] Software	476	109,785,086.00
[-] Operating Systems	374	1,012,034.00
Mid-range	2	453,370.00
PC Server	52	234,540.00
PC Desktop/Laptop	320	324,124.00
[-] Application	54	92,658,916.00
Mid-range	6	34,534,681.00
PC Server	12	34,667,890.00
PC Desktop/Laptop	36	23,456,345.00
[-] Tools & Utilities	48	16,114,136.00
Mid-range	16	6,457,230.00
PC Server	8	6,422,345.00
PC Desktop/Laptop	24	3,234,561.00

Since most organizations don't have accurate quantitative information on the items that they will need to transfer to their outsourcers, they must perform the discovery quantitative analysis during the planning stage.

• **Strategy and project planning**

Since BPO/ITO is a realization of its corresponding strategies and projects, 8Manage SPM provides tools to assist the user to perform strategy and project planning.

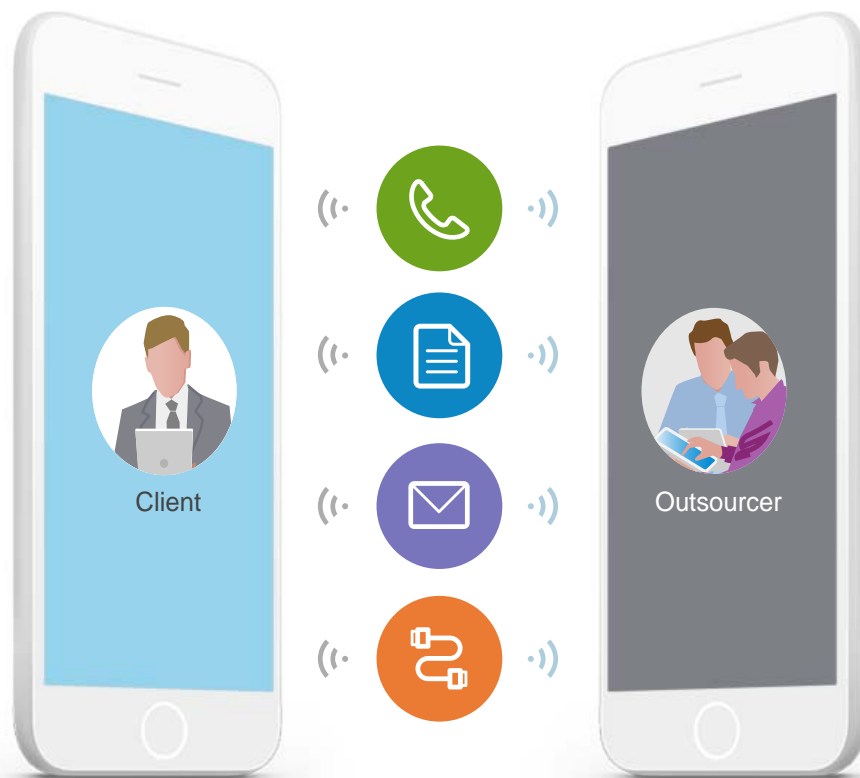


A major strategies of BPO/ITO can be broken down into sub-strategies and each sub-strategy can be broken down into projects.

The strategy and project planning facility not only can help the host company to have better control on the execution of its strategies and projects, it will also help the outsourcers know better what need to be performed.

- **Contracting**

8Manage SPM provides contracting functions to capture the terms and conditions of the BPO/ITO and reinforce deliveries and acceptance are in line with the terms and conditions.



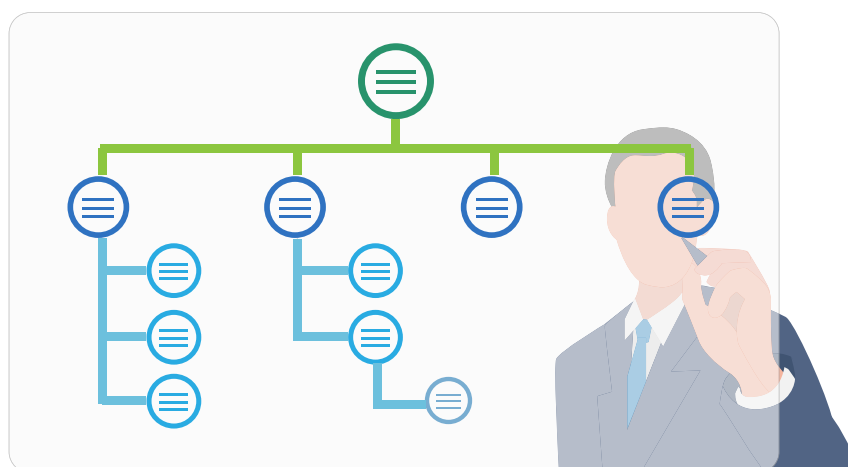
8Manage SPM supports project-and-milestone based deliveries and acceptance for products and services. It allows a number of delivery milestones to be in one or more projects linked to the contract. In the contract level, the user can view and manage all resources, activities, dependencies, deliverables , milestones and costs for each project individually or all projects collectively.

- Transition



Comprehensive BPO/ITO require well planned transition. Getting staff and process ready for comprehensive BPO/ITO can be a large undertaking. 8Manage SPM provides planning and execution tools for BPO/ITO transition management. The transition will be treated as a set of well planned activities. 8Manage SPM will track their progress and completion to ensure that transition is fully complete before the start of the BPO/ITO.

- BPO/ITO project management



8Manage SPM provides cross-organization and across-location project management facility for the BPO/ITO staff to record their progress and BPO/ITO manager to manage the activities and results. For operational BPO/ITO projects, 8Manage SPM can automatically generate repeated tasks according to the pre-defined schedule. For non-operational BPO/ITO projects, 8Manage SPM provides user-defined work breakdown structure and automatic tracking.



OUTSOURCING

www.8manage.com

Wisage Technology is an international software product company with clients in many countries and regions, including the U.S., Canada, China mainland, Hong Kong, Macau, Taiwan, Malaysia and Singapore. All its products are mobile internet ready and can be accessed with IE, Firefox, Safari and Chrome browsers and we also provide different apps on Android and iOS. It offers perpetual licenses for all regions and SaaS in certain regions only for the following products:

8Manage CRM : Mobile Internet CRM	8Manage eExpense : Web & Smartphone Expense Report System
8Manage SPM : Supplier & Procurement Management	8Manage eLeave : eLeave & Leave Management
8Manage Simple PM : Simple to Start & Extend PM	8Manage eTimesheet : Web & Smartphone Timesheet System
8Manage PM : Advanced Tool for Project Planning & Execution	8Manage eLearning : Advanced eLearning System
8Manage PMO : High Performance PMO	8Manage eSurvey : Easy-to-use eSurvey System
8Manage Finance : Strong Connectivity with Businesses & Operations	8Manage eDMS & KM : eDocument & Knowledge Management
8Manage HR : Human Capital Management	
8Manage OA : New Generation Office Automation	
8Manage BI : Point-and-click BI	
8Manage O2O : B2C, B2B, eExchange, eSettlement & eERP	
8Manage FAS : Knowledge Enterprise Full Automation Suite	
8Manage eERP2 : Manufacturer eERP2	

North, Central & South Americas
 24 West Borough Street,
 Thornhill, Markham Ontario L3T 4X5
 T: +1 (647) 709-8369

Asia Pacific
 2702-6 Lucky Commercial Centre
 103-9 Des Voeux Road West Hong Kong
 T: +(852) 8141 0396

China
 Room E1, 16/F China Everbright Bank Building
 689 Tianhe Beilu Guangzhou 510630
 T: +(86) 20 3873 2292

Contact Sales : sales@wisagetech.com